



📍 35 Frome Road, Southwick, Trowbridge, Wiltshire, BA14 9QG

🏠 Auction Guide £160,000

- For Sale by Online Auction
- Thursday 12th February 2026
- Lot 26
- Guide Price £160,000+

🏡 Freehold

🏠 EPC Rating D



LOT 26
FOR SALE BY ONLINE AUCTION
THURSDAY 12th FEBRUARY 2026
GUIDE PRICE £160,000+

3 Bedroom semi-detached house with a large rear garden offering potential for extension (subject to consents) in the popular village of Southwick. Ideal first time buy or investment.

The accommodation comprises on the ground floor; entrance hall, living room, dining room, kitchen, rear lobby and WC. On the first floor; 3 good-sized bedrooms and a family bathroom. The property has double glazing and gas heating.

There is a front garden, laid mainly to lawn with path to front door. At the rear is a large enclosed garden laid mainly to lawn offering scope for extension (subject to consents). On street parking is available nearby on a 'first come first served' basis.

what3words:///desiring.triangles.snowballs

Situation & Description

3 Bedroom semi-detached house with a large rear garden offering potential for extension (subject to consents) in the popular village of Southwick. Ideal first time buy or investment.

Southwick is a large village with a pub, shop, church, junior school and a village social club, situated on the outskirts of the Wiltshire County town of Trowbridge and 7 miles from the market town of Frome, with nearby Bradford on Avon all providing a mixture of individual shops and larger stores. Bath is also within commuting distance. Many accessible countryside walks close by including the 156-acre Southwick Country Park.

The accommodation comprises on the ground floor; entrance hall, living room, dining room, kitchen, rear lobby and WC. On the first floor; 3 good-sized bedrooms and a family bathroom. The property has double glazing and gas heating.

There is a front garden, laid mainly to lawn with path to front door. At the rear is a large enclosed garden laid mainly to lawn offering scope for extension (subject to consents). On street parking is available nearby on a 'first come first served' basis.

Viewings

To arrange a viewing, contact: Trowbridge Office on 01225 617030

There will be numerous pre-arranged open house viewing slots lasting for 30 minutes and you can book in by contacting the Auctioneers.

If you have any concerns with viewings, please contact the relevant Strakers office and we would be happy to discuss them with you and hopefully put you at ease.

Online Auction

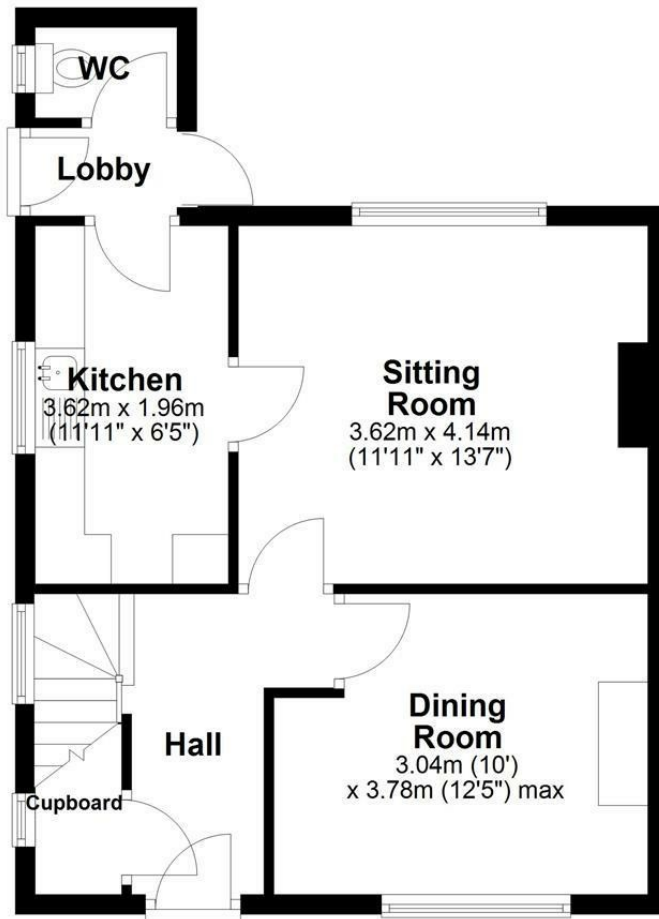
In order to bid at Strakers Online Auctions, you will first need to create an account by providing your contact details. You will be asked to read and accept our Online Auction Terms and Conditions. In order to bid online, you will be required to register a credit or debit card for the bidder security deposit. Strakers are required by law to carry out an online anti-money laundering check on all persons wishing to bid. In general terms, you are strongly advised to view the property and take professional advice as to its condition and suitability.

When the auction opens at 8am the day of the auction, you will be able to place bids in line with the pre-determined bid increment levels, using the bid increase (+) and decrease (-) buttons provided. It is recommended you check your web browser will allow you to bid in good time as some browsers' security can block the ability to bid. We recommend using Google Chrome when possible.



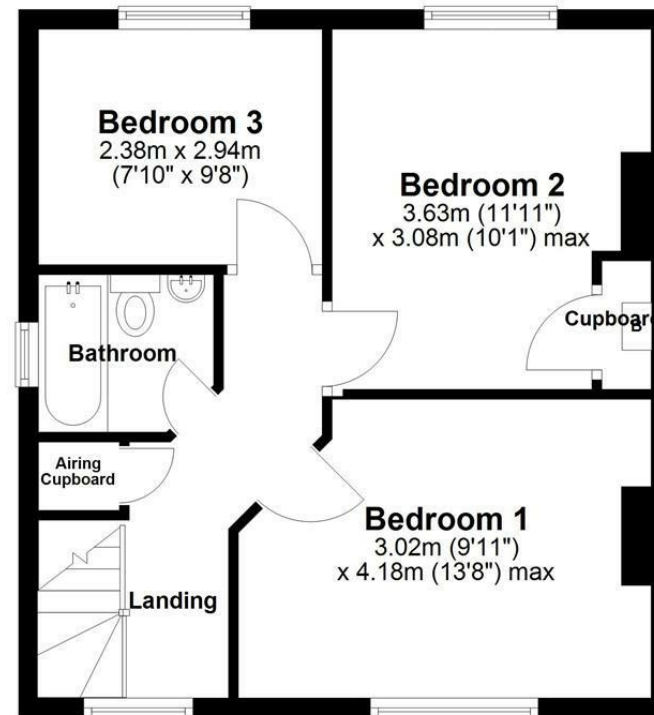
Ground Floor

Approx. 44.8 sq. metres (482.7 sq. feet)



First Floor

Approx. 42.0 sq. metres (451.7 sq. feet)



Total area: approx. 86.8 sq. metres (934.4 sq. feet)

Disclaimer: These particulars, whilst believed to be accurate are set out as a general outline only for guidance and do not constitute any part of an offer or contract. Intending purchasers should not rely on them as statements of representation of fact, but must satisfy themselves by inspection or otherwise as to their accuracy. No person in this firm's employment has the authority to make or give any representation or warranty in respect of the property. All measurements and distances are approximate only. Your home is at risk if you do not keep up repayments on a mortgage or other loan secured on it.